

ACTIVE DYNAMIC FILTER

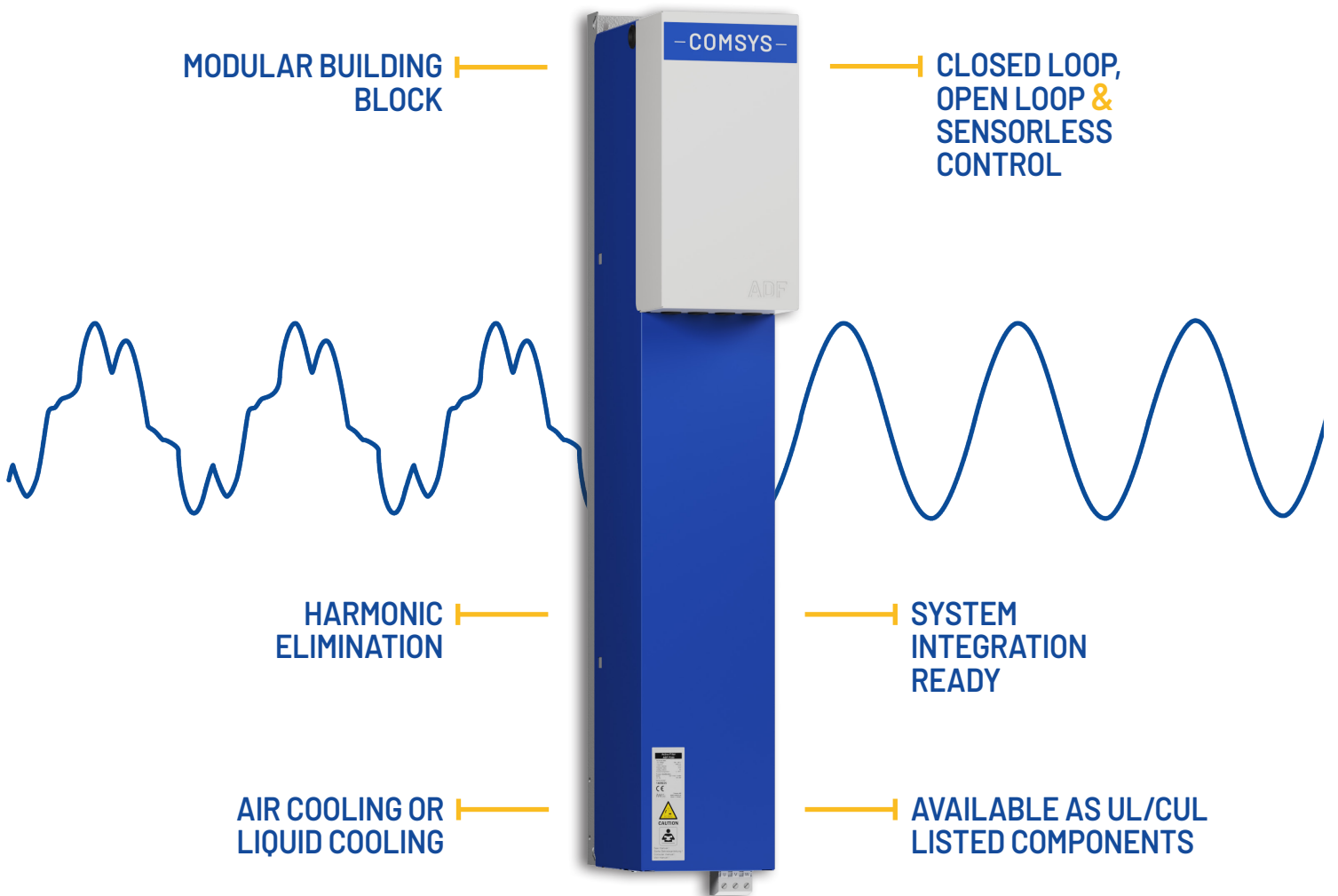
ADF PPM300

480 V CE: 50, 75, 90, 120, 150 A

600/690 V CE: 90, 140 A (LC)

480 V UL/cUL: 110 A

690 V UL/cUL: 90 A



— COMSYS —
comsys.se/adf



TECHNICAL SPECIFICATION ADF PPM300

MODEL	PPM300v2b-3-A-50/480	PPM300v2b-3-A-75/480	PPM300v2b-3-A-90/480	PPM300v2b-3-A-120/480	PPM300v2b-3-A-150/480
COMPENSATION CURRENT CAPACITY AT 50/60 HZ	50 A _{RMS}	75 A _{RMS}	90 A _{RMS}	120 A _{RMS}	150 A _{RMS}
SYSTEM VOLTAGE	480 V (208 - 480 V)				
NOMINAL FREQUENCY	50 - 60 Hz + 2%				
NUMBER OF PHASES	3 phase 3 wire				
CONNECTION TYPE	3 phase without neutral (TN, TT, IT)				
HARMONIC CURRENT COMPENSATED	Individual compensation up to 49th order				
RATE OF HARMONIC REDUCTION	Better than 98%				
CURRENT COMPENSATION OF COS φ	Up to 1.0				
EXPANDABILITY	Up to 3 modules can be controlled by one SCC2-P3 Up to 6 modules can be controlled by one SCC2-P6 Cluster of up to 15 SCC2 units can work in parallel for up to 90 PPM modules				
RESPONSE TIME	< 1 ms				
HEAT DISSIPATION	< 1475 W	< 2410 W	< 3055 W	< 3030 W	< 3100 W
MAXIMUM AIR FLOW	< 600 m ³ /h / 353 CFM				
NOISE LEVEL	< 70 dB(A)				
ENVIRONMENT	0 to 95% RH non-condensing, max. altitude 1000 m / 3281 ft. without derating				
OPERATING TEMPERATURE	0 to 50° C, up to 40° C without derating 32 to 122 °F, up to 104 °F without derating				
DIMENSIONS (W × H × D)	227 × 1443 × 471 mm 8.9 × 56.8 × 18.5 inch				
WEIGHT	79 kg / 739 lbs			93 kg / 1343 lbs	
CABINET COLOR	Cabinet RAL 7035 (light grey), base RAL 7022 (umbra grey)				
PROTECTION CLASS	IP20 according to IEC 60529				
ELECTROMAGNETIC COMPATIBILITY	EN 61000-6-2, EN 61000-6-4. Conducted emission EN 55011 class A1				
ENVIRONMENTAL CONDITIONS	Chemical 3C3, Mechanical 3S3				
CERTIFICATES	CE, DNV				

Comsys AB does not assume any responsibility for use of any product or method described and also reserves the right to make changes at any time without prior notice in order to improve design and supply the best possible products.

— COMSYS —
comsys.se/adf



TECHNICAL SPECIFICATION ADF PPM300

MODEL	PPM300v2-3-A-110/480-UL	PPM300v2-3-A-90/600 PPM300v2-3-A-90/690-UL	PPM300v2-3-W-140/690
COMPENSATION CURRENT CAPACITY AT 50/60 HZ	110 A _{RMS}	90 A _{RMS}	140 A _{RMS}
SYSTEM VOLTAGE	480 V (208 - 480 V)	690 V (480 - 690 V)	
NOMINAL FREQUENCY	45 - 65 Hz (Including floating frequency)		
NUMBER OF PHASES	3 phase 3 wire		
CONNECTION TYPE	3 phase without neutral (TN, TT, IT)		
HARMONIC CURRENT COMPENSATED	Individual compensation up to 49th order		
RATE OF HARMONIC REDUCTION	Better than 98%		
CURRENT COMPENSATION OF COS ϕ	Up to 1.0		
EXPANDABILITY	Up to 3 modules can be controlled by one SCC2-P3 Up to 6 modules can be controlled by one SCC2-P6 Cluster of up to 15 SCC2 units can work in parallel for up to 90 PPM modules		
RESPONSE TIME	< 1ms		
HEAT DISSIPATION	< 2725 W	< 2969 W	< 3600 W
COOLING REQUIREMENTS	< 600 m ³ /h / 353 CFM		$\Delta P = 100$ kPa at 14 l/min $\Delta P = 60$ kPa at 10 l/min (recommended)
COOLING MEDIA	Air		Liquid
NOISE LEVEL	< 70 dB(A)		
ENVIRONMENT	0 to 95% RH non-condensing, max. altitude 1000 m / 3281 ft. without derating		
OPERATING TEMPERATURE	0 to 50° C, up to 40° C without derating 32 to 122 °F, up to 104 °F without derating		0 to 50 °C (32 to 122 °F) ambient and up to 45 °C (113 °F) cooling medium
DIMENSIONS (W × H × D)	230 × 1400 × 470 mm 9 × 55 × 18.5 inch		
WEIGHT	133 kg / 293 lbs	138 kg / 304 lbs	
CABINET COLOR	Cabinet RAL 7035 (light grey), base RAL 7022 (umbra grey)		
PROTECTION CLASS	IP20 according to IEC 60529		
ELECTROMAGNETIC COMPATIBILITY	EN 61000-6-2, EN 61000-6-4. Conducted emission EN 55011 class A1		
ENVIRONMENTAL CONDITIONS	Chemical 3C3, Mechanical 3S3		
CERTIFICATES	CE, UL, cUL (UL508/CSA22.2)	CE, DNV CE, UL, cUL (UL508/CSA22.2)	CE, DNV

Comsys AB does not assume any responsibility for use of any product or method described and also reserves the right to make changes at any time without prior notice in order to improve design and supply the best possible products.

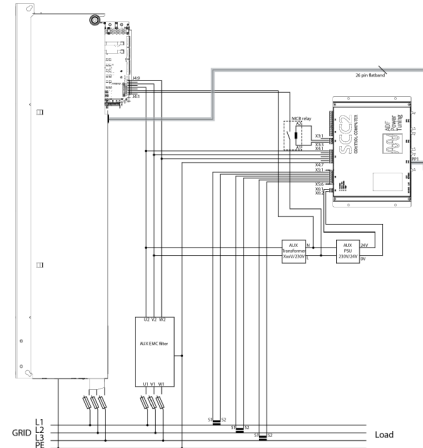
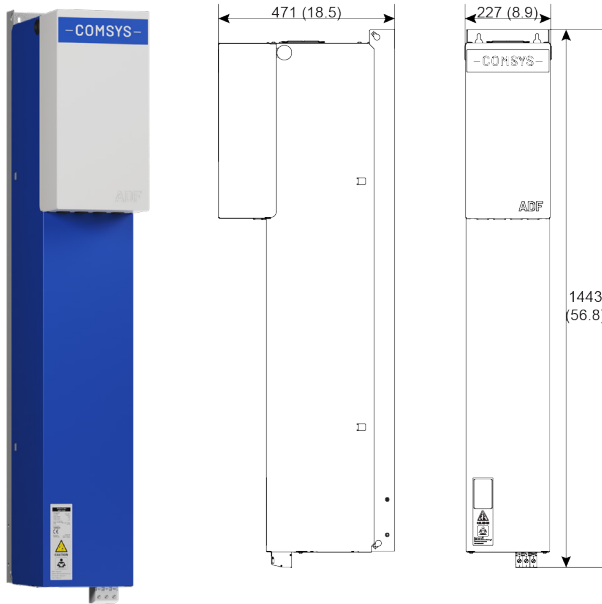
— COMSYS —
comsys.se/adf



DIMENSIONS & CONNECTION

mm (inches) IP20

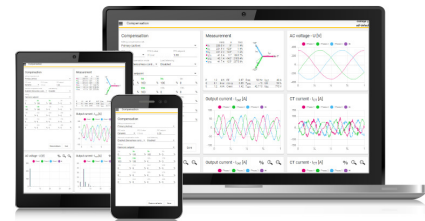
Example connection diagram



THE ADF PRODUCT RANGE

The ADF product range consists of versatile tools to address your unique power quality challenges in a way that is cost efficient.

For extreme resonances and interharmonics, to a powerful solution for a compact space, each ADF product targets different power levels in commercial and industrial applications in the low and medium voltage segments.



— COMSYS —
comsys.se/adf

